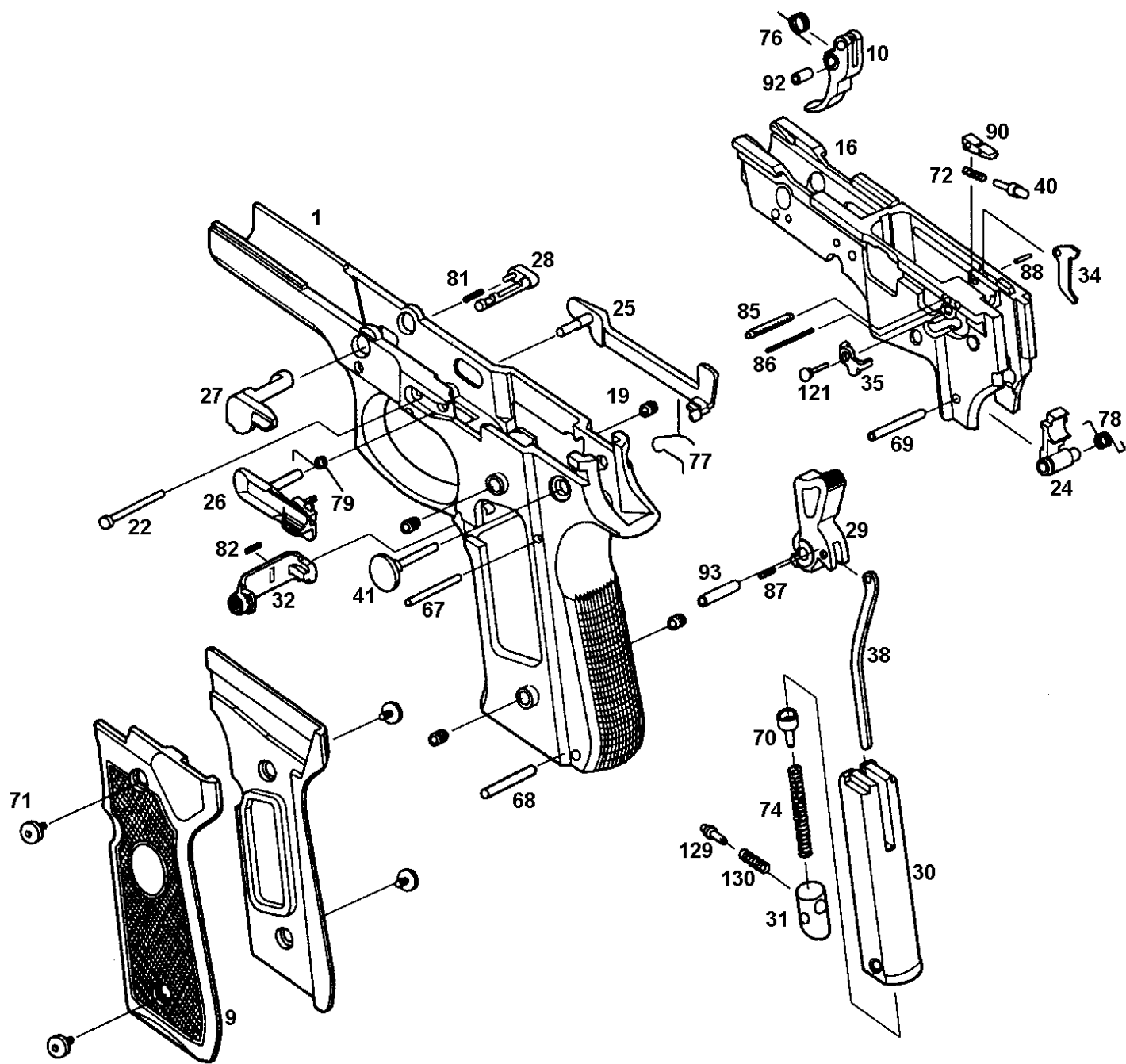


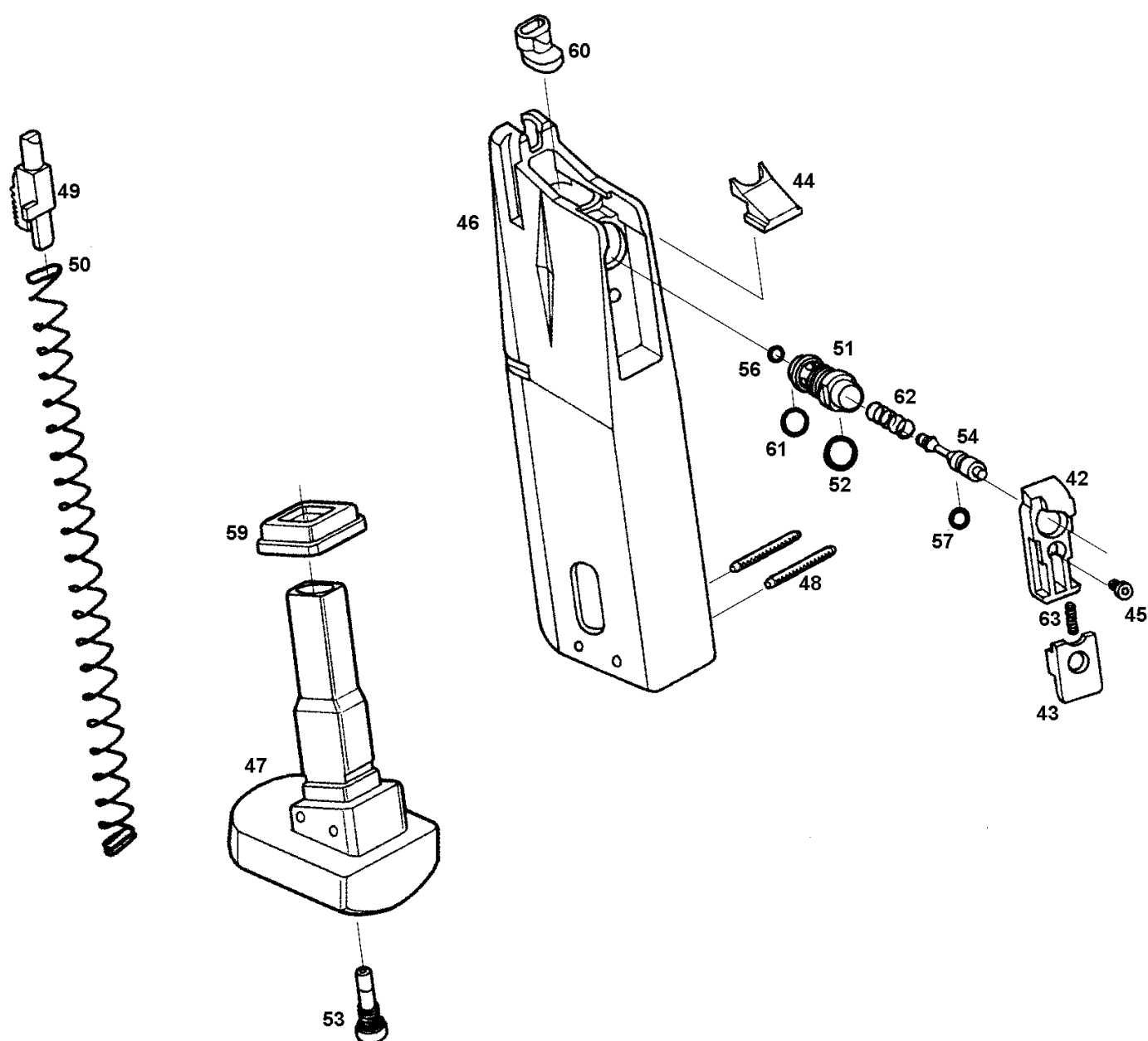
This exploded view diagram illustrates the assembly of a handgun, with parts numbered 1 through 128. The components are organized into several sub-assemblies:

- Slide Assembly (Top Right):** Includes the slide (2), slide stop (124), slide stop pin (126), slide stop spring (12), slide stop lever (14), slide stop lever pin (21), slide stop lever spring (15), slide stop lever pin (13), slide stop lever pin (80), slide stop lever pin (23), slide stop lever pin (98), slide stop lever pin (75), slide stop lever pin (96), slide stop lever pin (103), slide stop lever pin (97), slide stop lever pin (104), slide stop lever pin (99), slide stop lever pin (100), slide stop lever pin (101), slide stop lever pin (105), slide stop lever pin (106), slide stop lever pin (109), slide stop lever pin (110), slide stop lever pin (102), slide stop lever pin (83).
- Frame Assembly (Bottom Right):** Includes the frame (1), trigger (108), trigger pin (95), trigger spring (36), trigger lever (37), trigger lever pin (89), trigger lever pin (109), trigger lever pin (110), trigger lever pin (102), trigger lever pin (83).
- Barrel Assembly (Bottom Left):** Includes the barrel (6), barrel pin (125), barrel pin (101), barrel pin (7), barrel pin (105), barrel pin (106), barrel pin (109), barrel pin (110), barrel pin (102), barrel pin (83).
- Slide Stop Assembly (Top Left):** Includes the slide stop lever (8), slide stop lever pin (91), slide stop lever pin (3).
- Slide Stop Spring Assembly (Middle Left):** Includes the slide stop spring (73), slide stop spring pin (127), slide stop spring pin (128), slide stop spring pin (39).

1



NO.	Parts No.	Parts Name	Price	NO.	Parts No	Parts Name	Price
1	BT-AK-001	E2 frame HW	4,700	69	9546	sear sleeve	100
9	9504	grip	800	70	BT-AK-070	E2 cap	200
10	9809	trigger	500	71	BT-AK-071	E2 grip screw	100
16	BT-AE-016	chassis	2,500	72	9859H	firing pin spring	200
19	BT-AK-19	E2 grip screw nut	100 x 4	74	BT-AK-074	E2 main spring	300
22	9536	trigger pin	200	76	BT-AK-076	E2 trigger spring	200
24	9820	sear	300	77	BT-AK-077	E2 trigger bar spring	200
25	BT-AE-025	trigger bar	500	78	BT-AK-078	E2 sear spring	200
26	BT-AE-026	slide stop	600	79	BT-AE-079	slide stop spring	200
27	9511	disassembly lever	600	81	9558	disassembling bottom spring	100
28	9512	disassembly bottom	300	82	BTA-135	magazine catch spring	100
29	BT-AK-029	E2 hammer	900	85	STD-150	firing pin guide pin A (2x14)	100
30	BT-AK-030	E2 main spring housing	900	86	STD-105	firing pin guide pin B (1x14)	40
31	BT-AK-031	E2 main spring cap	400	87	STD-143	hammer strut pin (2x6)	40
32	BT-AE-032	magazine catch	500	88	STD-143	hammer release lever pin	40
34	BT-AK-034	E2 hammer release lever	300	90	9874	firing pin guide	200
35	BT-AK-035	E2 valve lock release lever	200	92	BT-AK-092	E2 trigger sleeve	100
38	BT-AK-038	E2 hammer strut	200	93	BT-AK-093	E2 hammer sleeve	100
40	9830N	firing pin	300	121	BT-AE-121	valve lock release pin	200
41	9831	hammer pin	200	129	BT-AK-129	E2 magazine plunger	200
67	9545	sear pin	100	130	BT-AK-130	E2 magazine plunger spring	200
68	9544	main spring housing pin	100				



NO.	Parts No.	Parts Name	Price	NO.	Parts No	Parts Name	Price
42	9232	valve guide E	500	52	STD-026	10x8x1	100
43	9233	valve lock E	500	53	BT-AE-053	BTV charging valve	700
44	9234	packing guide E	200	54	BT-AK-054	E2 valve	600
45	9835S	valve guide screw S	100	56	STD-002	S-3	100
46	9236	magazine case	2,500	57	STD-021	5x3x1	100
47	BT-AE-047	elite magazine base	800	59	9563	magazine packing	200
48	STD-151	magazine base pin(2x20)	100	60	9850R	large gas route	200
49	9839H	magazine follower	300	61	STD-025	9x7x1	100
50	9840H	magazine spring	300	62	8659	impact spring	200
51	9241	valve sleeve E	800	63	9253	valve lock spring	100