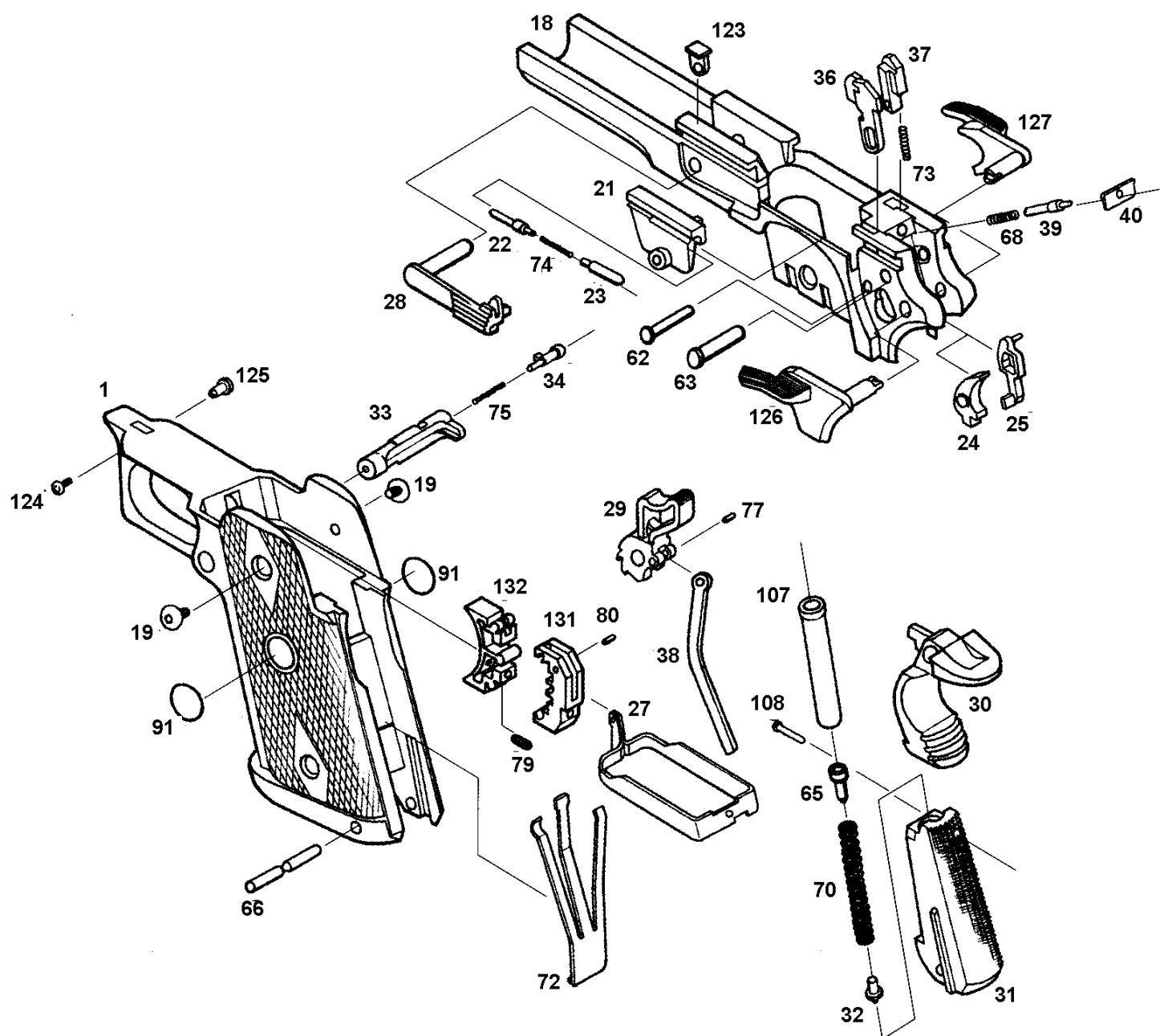


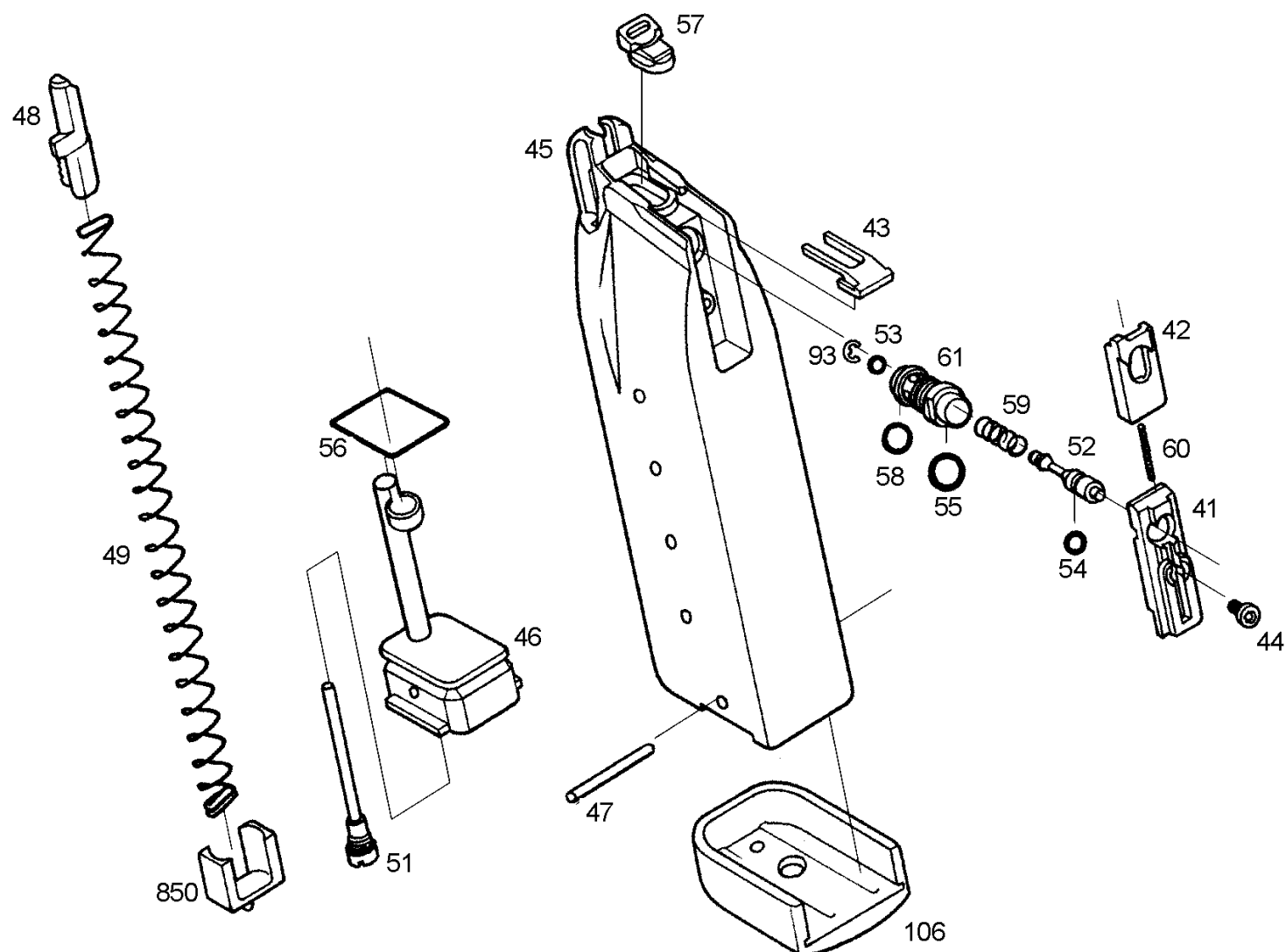
This exploded view diagram illustrates the assembly of a handgun, showing the relationship between various components. The main parts are labeled as follows:

- Slide Assembly:** Includes the slide (2Q), slide rail (2R), and slide stop (15).
- Frame Assembly:** Includes the frame (12A), frame extension (12B), and frame spring (869).
- Barrel Assembly:** Includes the barrel (4), barrel nut (205), and barrel nut washer (9).
- Trigger Assembly:** Includes the trigger (71), trigger guard (89), trigger spring (82), trigger pin (84), trigger pin bush (83), trigger pin nut (90), trigger pin lock (85), trigger pin lock washer (88), trigger pin lock nut (10), trigger pin lock washer (122), trigger pin lock nut (97), trigger pin lock washer (136), and trigger pin lock nut (128).
- Other Components:** Includes the magazine (504), magazine spring (509), magazine spring pin (102), magazine spring pin washer (11), magazine spring pin nut (99), magazine spring pin lock (98), magazine spring pin lock washer (8), magazine spring pin lock nut (133A), magazine spring pin lock washer (133B), magazine spring pin lock nut (13), magazine spring pin lock washer (136), magazine spring pin lock nut (128), magazine spring pin lock washer (136), magazine spring pin lock nut (128), magazine spring pin lock washer (136), and magazine spring pin lock nut (128).

1

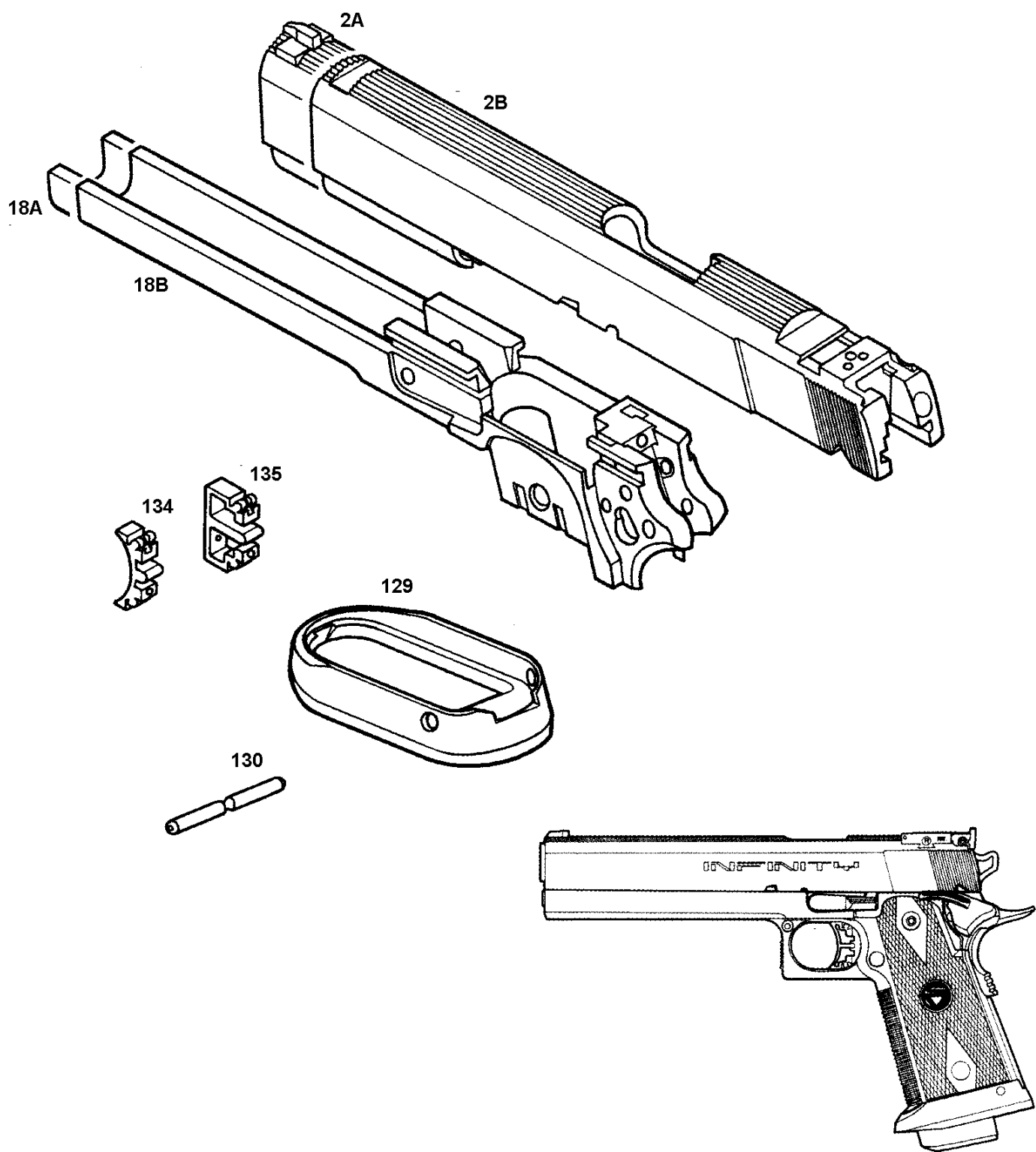


No	Parts No	Parts name	Price (¥)	No	Parts No	Parts name	Price (¥)
1	SVA-001	Grip frame	1800	63	8463	WL hammer pin B	140
18	SVM-018	Chassis	3500	65	3065	Cap	200
19	3019B	Grip screw LB	200x2	66	3066B	Main spring housing pin B	140
21	3021B	Plunger guide B	300	68	8068	Firing spring pin	20
22	3022	Slide stop plunger	200	70	3070	Main spring	300
23	8023	Safety plunger	200	72	SVU-072	Sear spring	600
24	3024	Sear	300	73	8073	Disconnecting guide spring	100
25	3025	Disconnecting bar	300	74	SVA-074	Plunger spring	100
27	SVA-027	Trigger bar	500	75	3075	Magazine catch spring	100
28	SVA-028	Slide stop	800	77	STD-145	Hammer strut pin 2x8	40
29	SVA-029	Square Hammer	1000	79	STD-212	Trigger stop screw M2.5 x 6	40
30	SVA-030	Grip safety	800	80	STD-122	Trigger pin 1.5x5	100
31	3031	Main spring housing	500	91	SVA-091	Medallion seal	N/A
32	3032	Retainer	200	107	3107	Cap sleeve	400
33	SVA-033	Magazine catch	600	108	3108	Cap sleeve pin	100
34	3034B	Magazine catch lock B	200	123	3123	Under rug	200
36	SVA-036	Valve lock release	200	124	3124B	Trigger guard screw B	200
37	3037B	Disconnecting guide	300	125	3125B	Trigger guard screw sleeve B	20
38	8038	Hammer strut	200	126	SVA-126	Safety left	1100
39	SVA-039	Firing pin	400	127	SVU-127	Safety right	900
40	8040	Firing pin stopper	200	131	SVU-131	IC trigger base	500
62	8462	WL sear pin B	200	132	SVU-132	IC trigger shoe	500



No	Parts No	Parts name	Price (¥)	No	Parts No	Parts name	Price (¥)
41	8641	Impact guide	500	59	8659	Impact spring	200
42	8642	Impact lock	500	60	SVA-060	Valve lock spring	100
43	8643	Gas route guide	300	61	SVA-061	Bore up valve sleeve	900
44	8044	Valve guide screw	100	93	STD-526	Impact E-ring 3	100
45	3045	Magazine case	2900	105	3105	Magazine plug	300
46	3046	Magazine base	500	109	3109	Plug packing	200
47	3047	Base pin	100	850	3850	Bumper retainer	100
48	3048	Magazine follower	300	106	SVA-106	Compact magazine bumper	500
49	3049	Magazine spring	400	-	SVA-901	Loader	400
51	8051	Charge valve	700	-	SVA-902	Loader rod head	100
52	SVA-052	Bore up valve	900	-	SVA-903	Loader rod	300
53	STD-003	S-4 valve O-ring	100	-	SVA-904	Loader pipe	300
54	STD-021	5x3x1 valve O-ring	100	-	SVU-147	1.5mm wrench	100
55	STD-026	10x8x1 sleeve O-ring	100	-	STD-585	2.5mm wrench	100
56	3056	Base packing	200	-	8691	Impact wrench	200
57	SVA-057	Gas route packing	200	-	STD-580	3mm wrench	100
58	STD-006	S-7 sleeve O-ring	100				

PARTS LIST FOR SV INFINITY LIMITED



No	Parts No	Parts name	Price (¥)	No	Parts No	Parts name	Price (¥)
2A	SVA-002	Slide 6inch	4500	129	SVA-129	Magazine well	800
2B	SVB-002	Slide 5inch	4500	130	SVA-130	Housing pin for mag-well	200
18A	SVA-018	Chassis 6inch	3800	134	SVA-134	Trigger shoe short	500
18B	SVB-018	Chassis 5inch	3500	135	SVA-135	Trigger shoe long	500